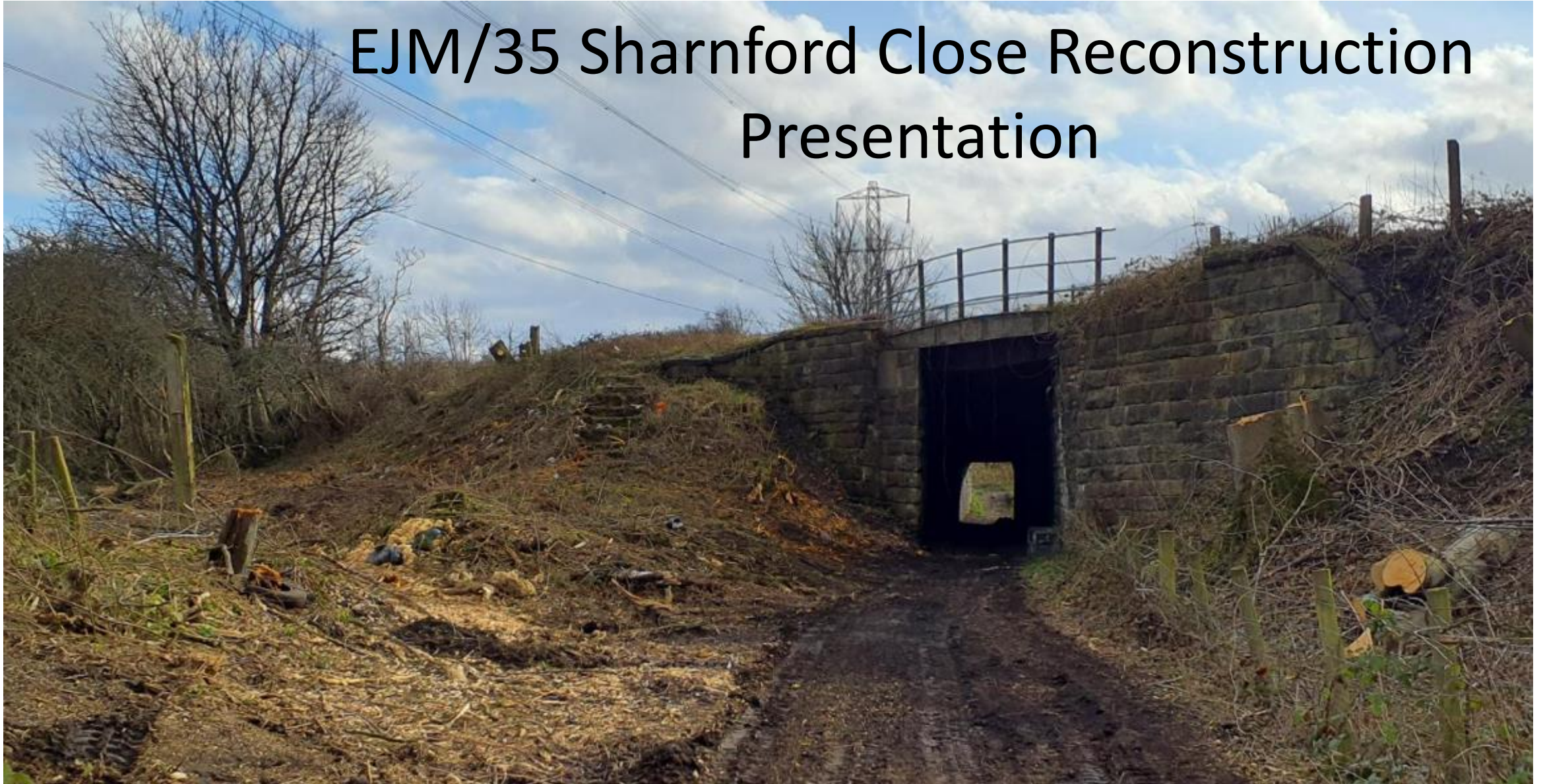
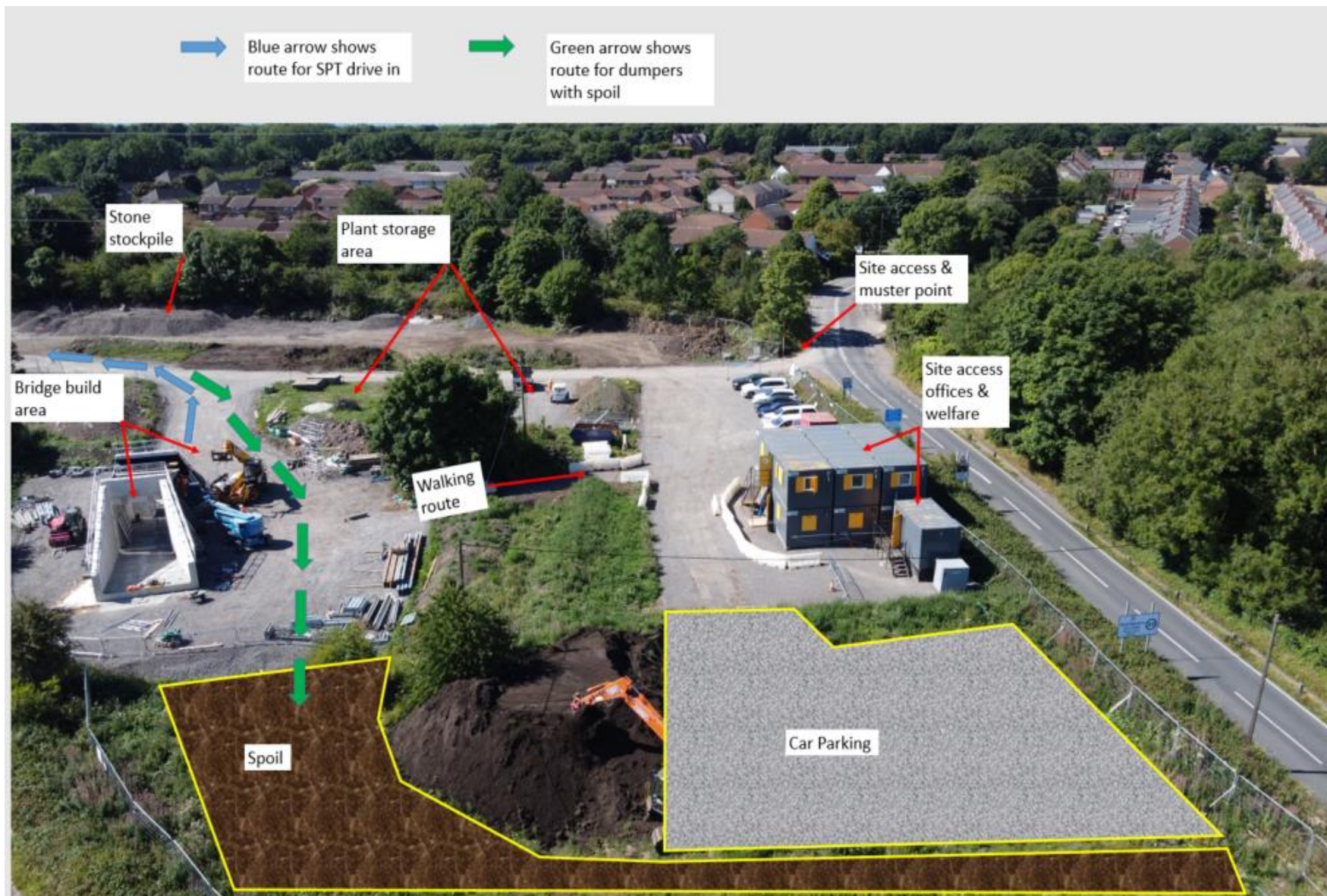
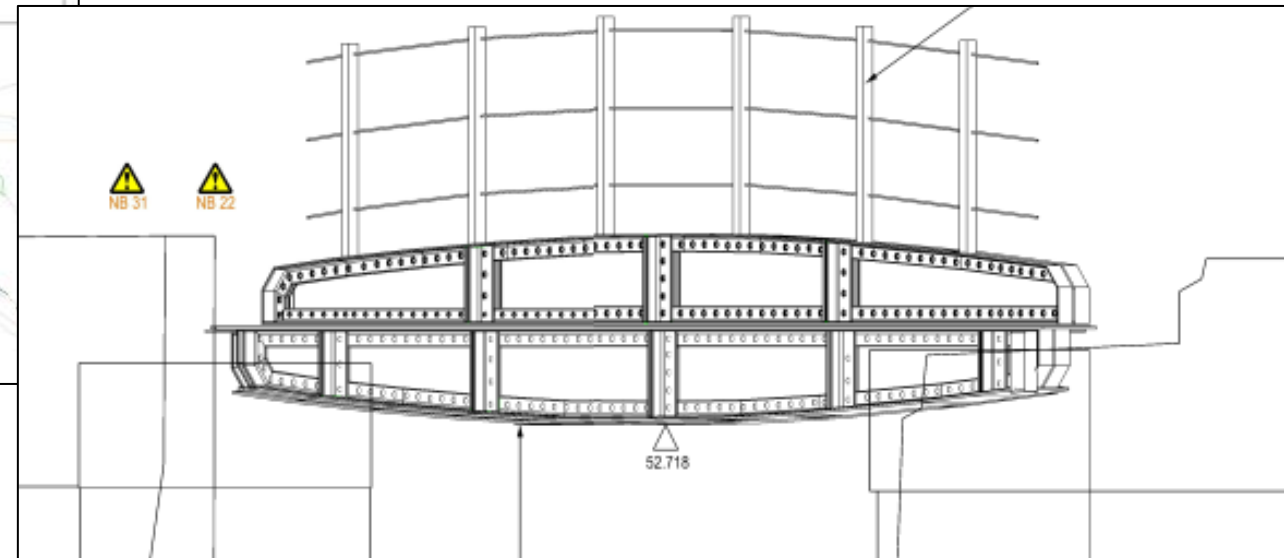
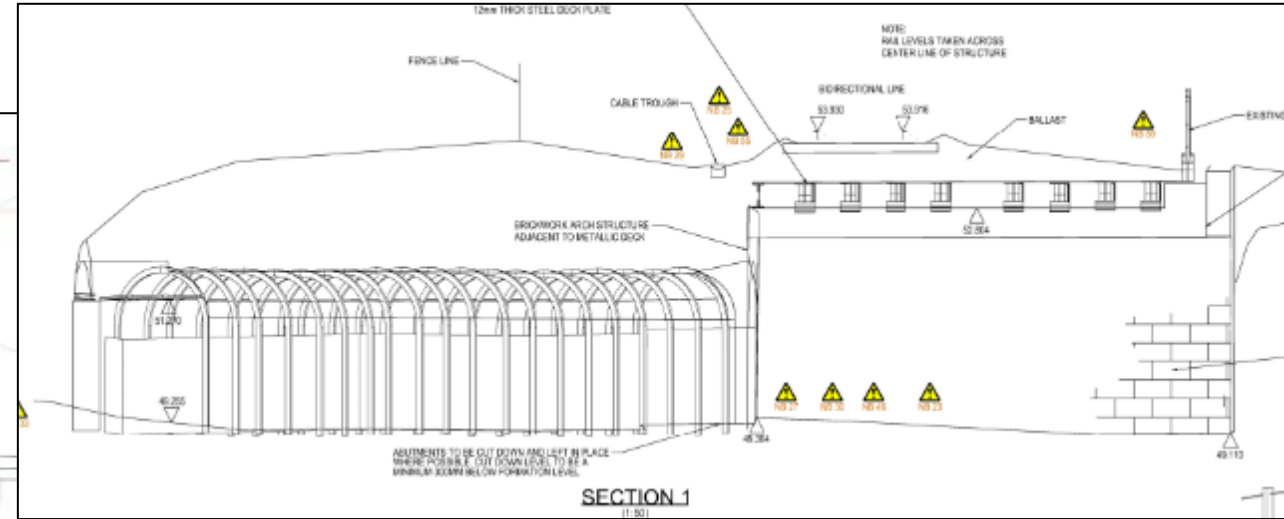


# EJM/35 Sharnford Close Reconstruction Presentation









































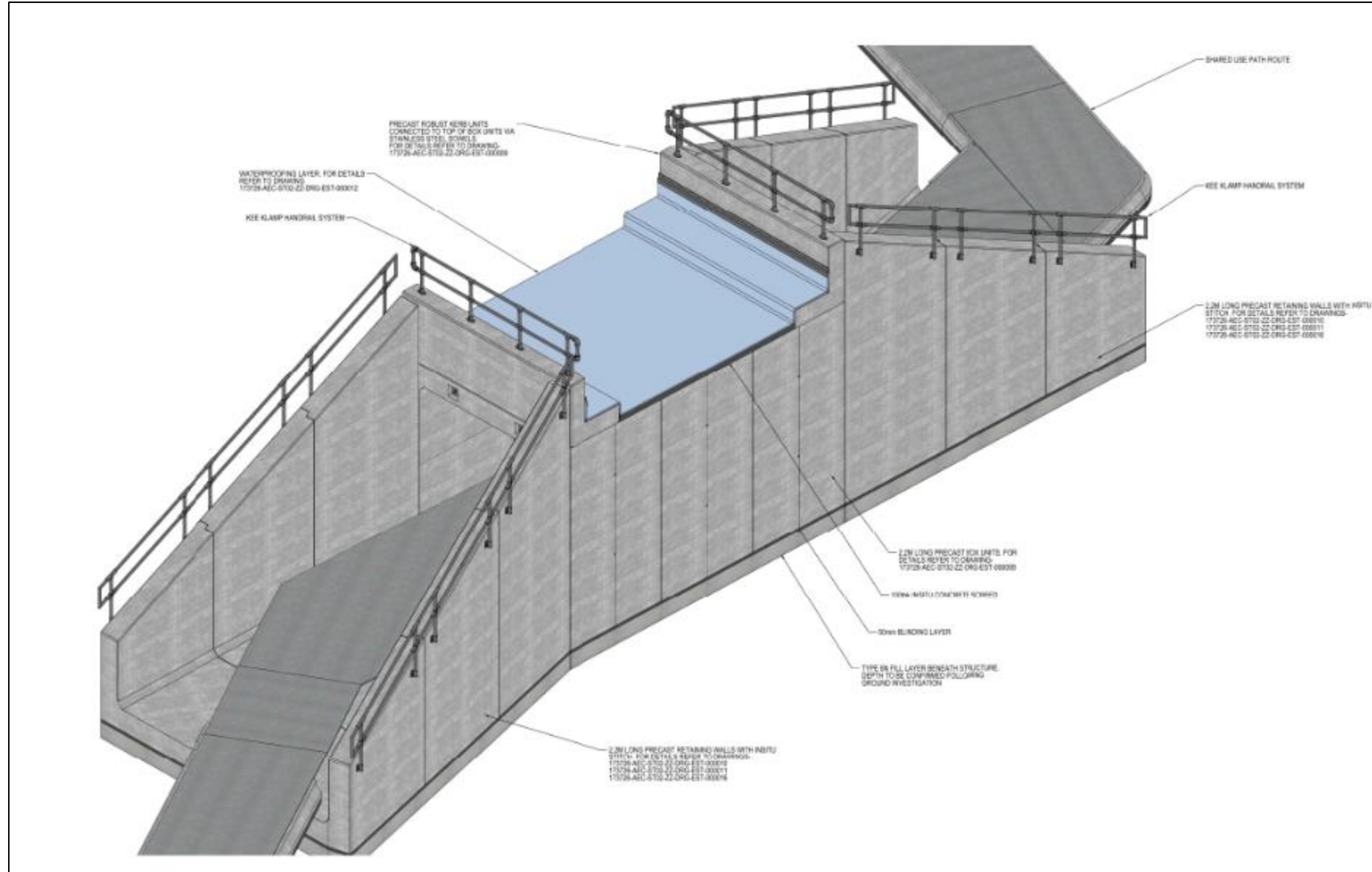






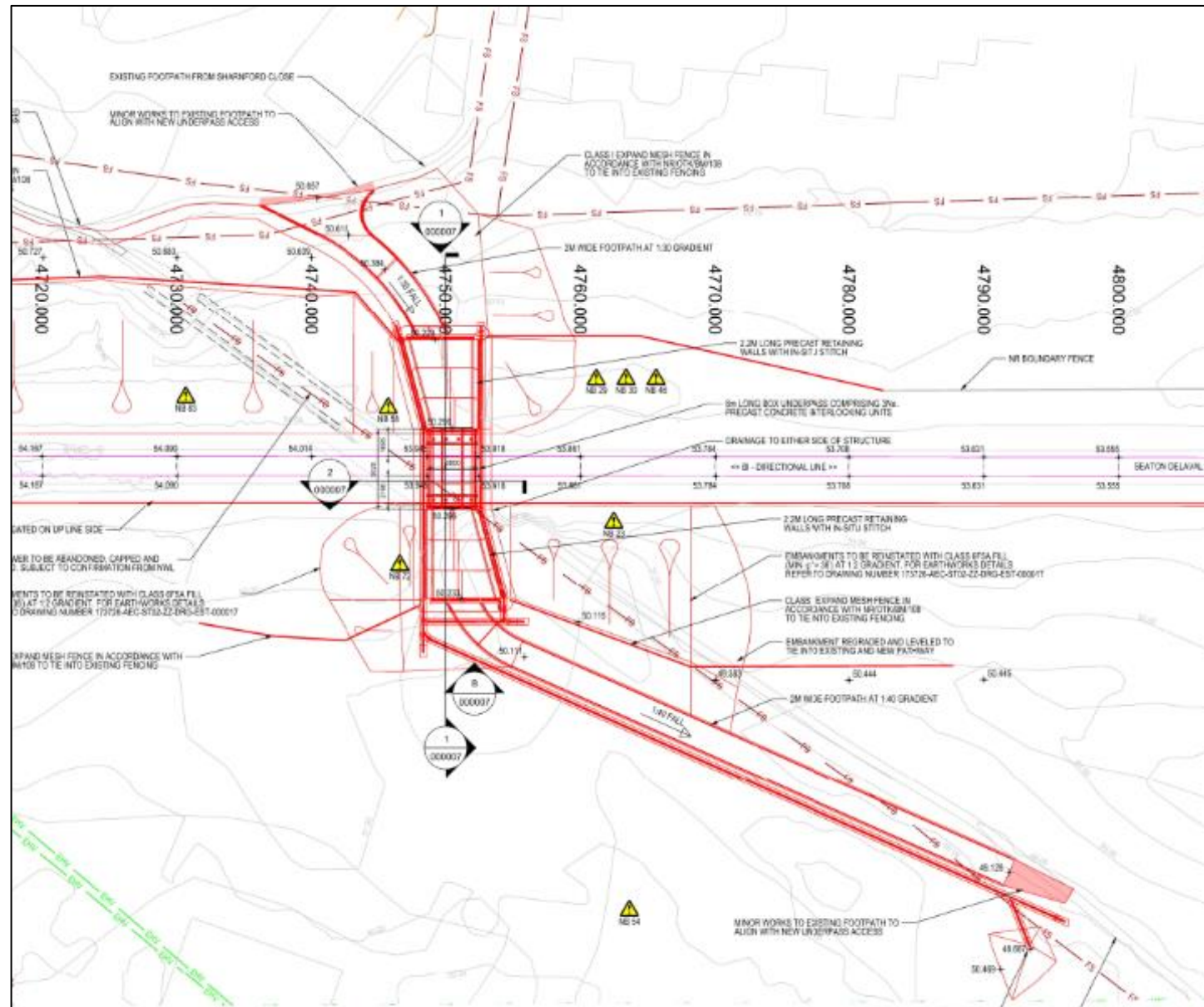








## PROPOSED STRUCTURE – Birds eye view





# Core Possession Sequence

22:00 25/08/22 – 05:30 30/08/22





Bridge pre-built in compound area

S&T Cables placed on fence line outside of embankment works area or will be disconnected at start of possession

Visible height restriction measures to be in place along all vehicle routes and drivers briefed.



# STAGE 1 – PWAY REMOVAL AND S&T DISCONNECTIONS

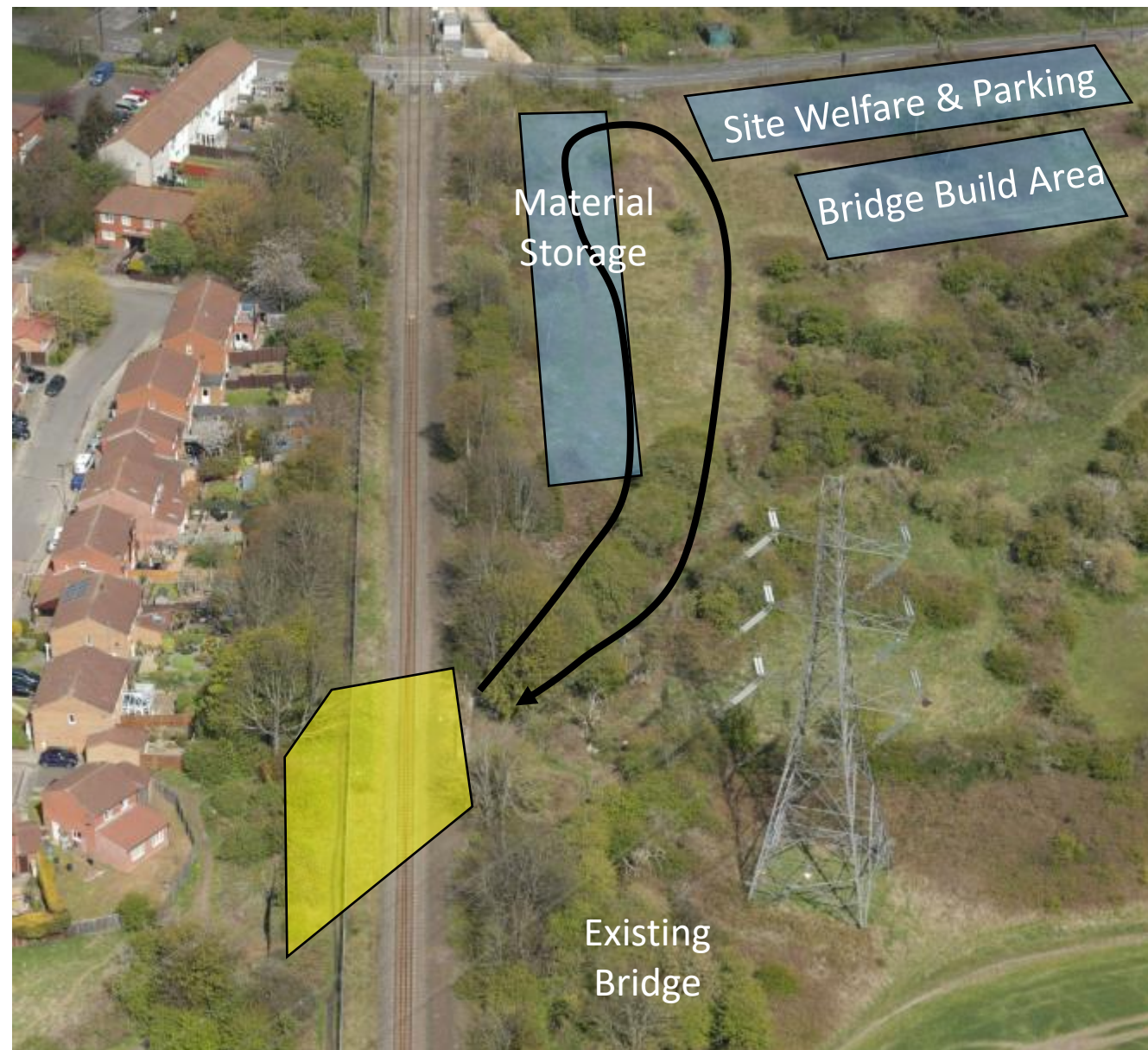


RRVs to access at Holywell and travel to site

54m of track to be removed using panel lifters and positioned away from extent of excavation



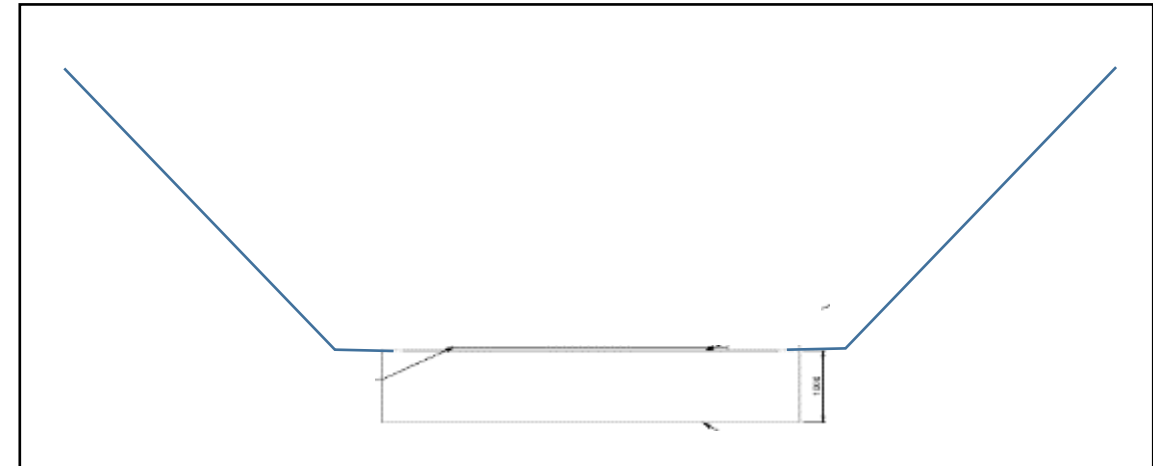
## STAGE 2 – BRIDGE AND EMBANKMENT REMOVAL



Bridge area to be excavated as required by design and moved to North end of material storage area along designated route shown.

50t excavators and 25-30t dumpers to be used.

Breakers to be used if necessary.





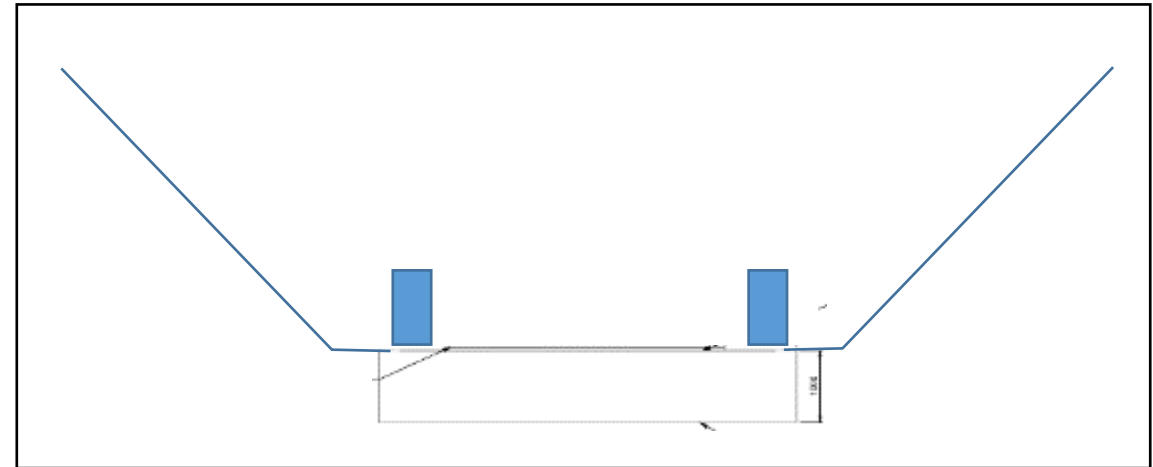
## STAGE 3 – FOUNDATIONS FOR BRIDGE DRIVE



Excavate as required and place compacted fill for:

- Jacks and timbers
- SPMT to drive on for bridge installation

Place 50mm sand layer on compacted fill material





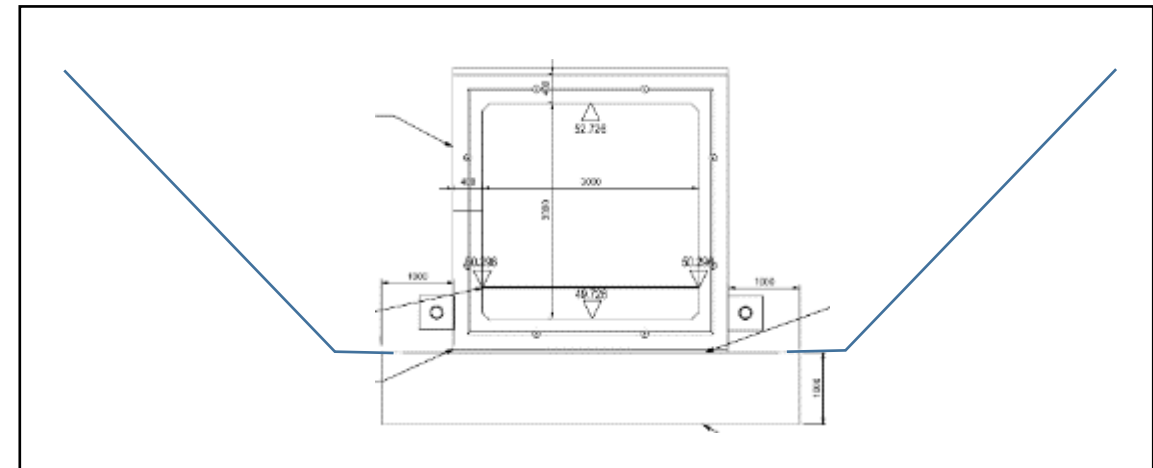
## STAGE 4 – INSTALL NEW BRIDGE SECTIONS



Drive new bridge into place in 3No sections and lower onto jacks.

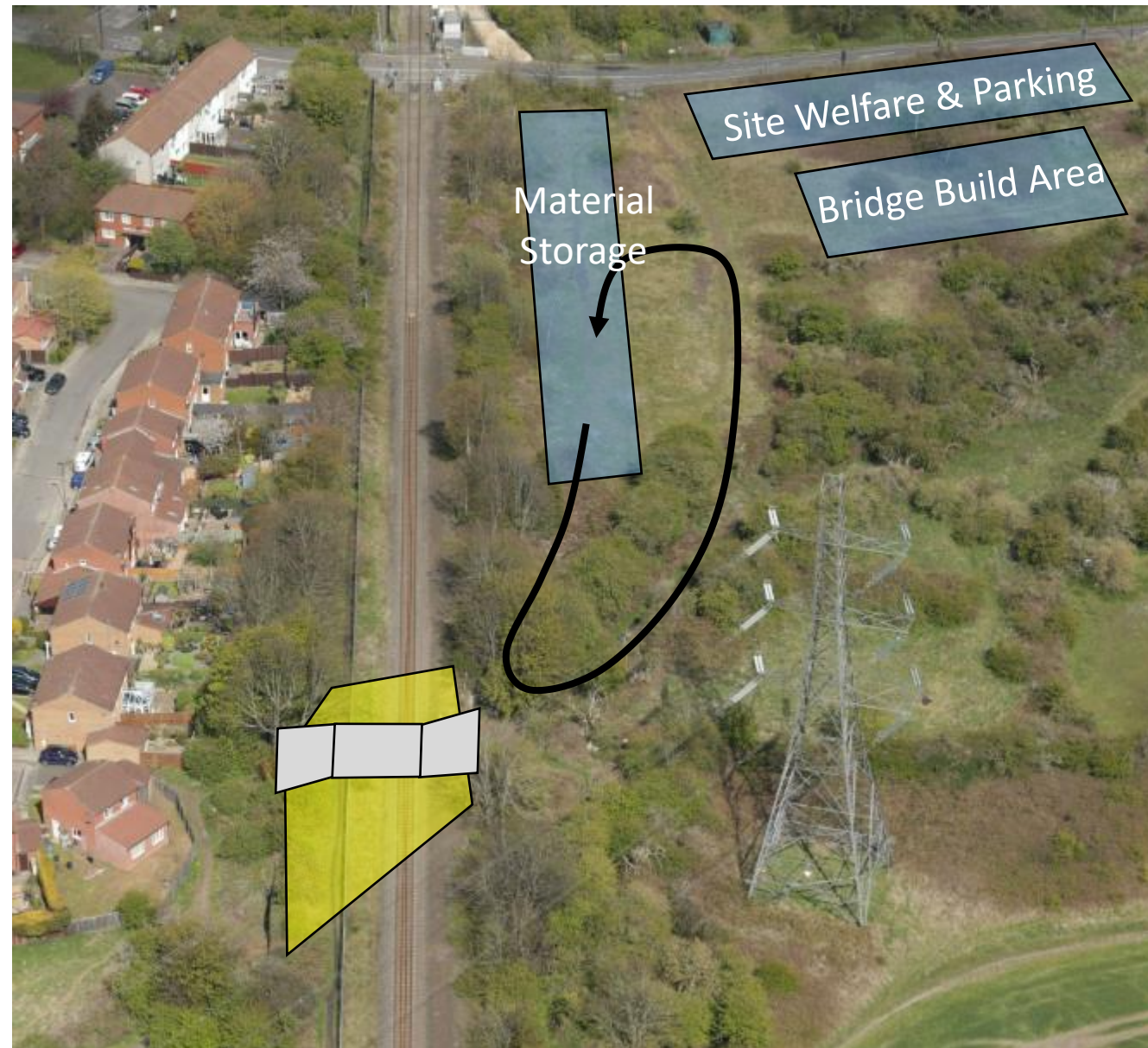
Jacks to lower bridge sections to ground level and packing to be removed from bridge area.

Temporary works to be removed.





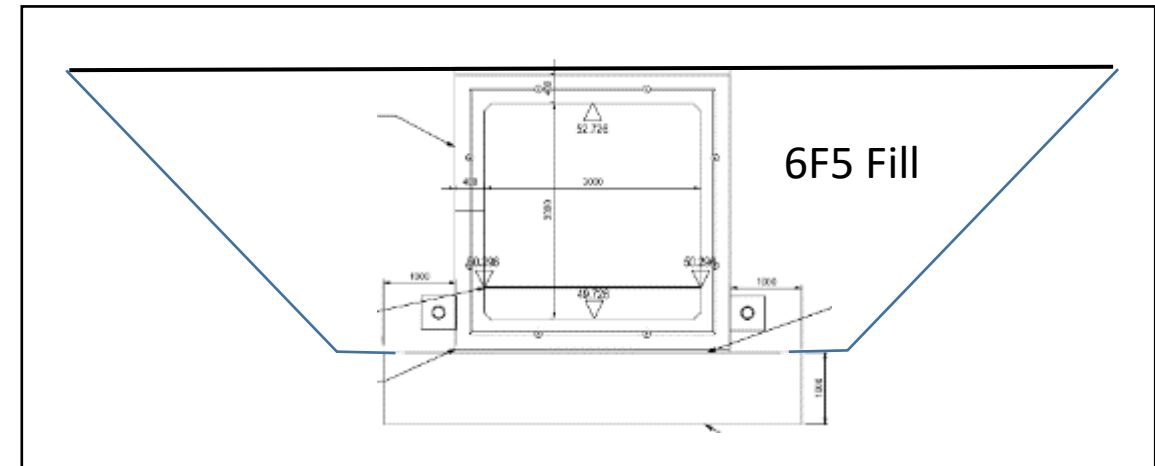
## STAGE 5 – BACKFILL TO TRACK LEVEL



Waterproofing detail between culvert and wingwall sections to complete.

Install drainage.

Backfill in layers up to 300mm below sleeper level.





## STAGE 6 – P-WAY AND S&T RECONNECTIONS



RRVs to travel from storage location and personnel to access.

Bottom ballast to be installed from storage area

Sleepers and tracks to be reinstated.

Top ballast to be placed.

Windhoff to align track.

Stressing and welding.

S&T reconnections to take place.

Tamp tracks and handback.



**Core Possession Timing**

22:00 Thursday – 02:30 Friday	Take possession and remove tracks/S&T
02:30 Friday – 14:30 Friday	Demolish existing bridge and abutments
14:30 Friday – 08:30 Saturday	Complete excavation and foundations for bridge install
08:30 Saturday – 06:30 Sunday	Install bridge
06:30 Sunday – 06:30 Monday	Drainage and backfill around new bridge
06:30 Monday – 23:30 Monday	Install formation and tracks / reconnect S&T cables
23:30 Monday – 05:30 Tuesday	Contingency time and hand back possession



